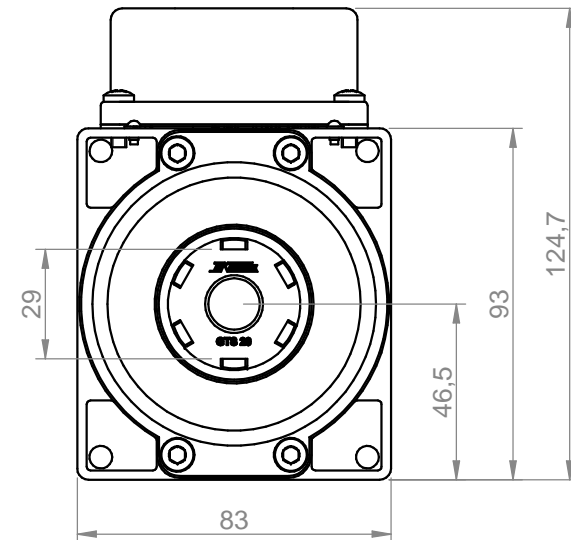
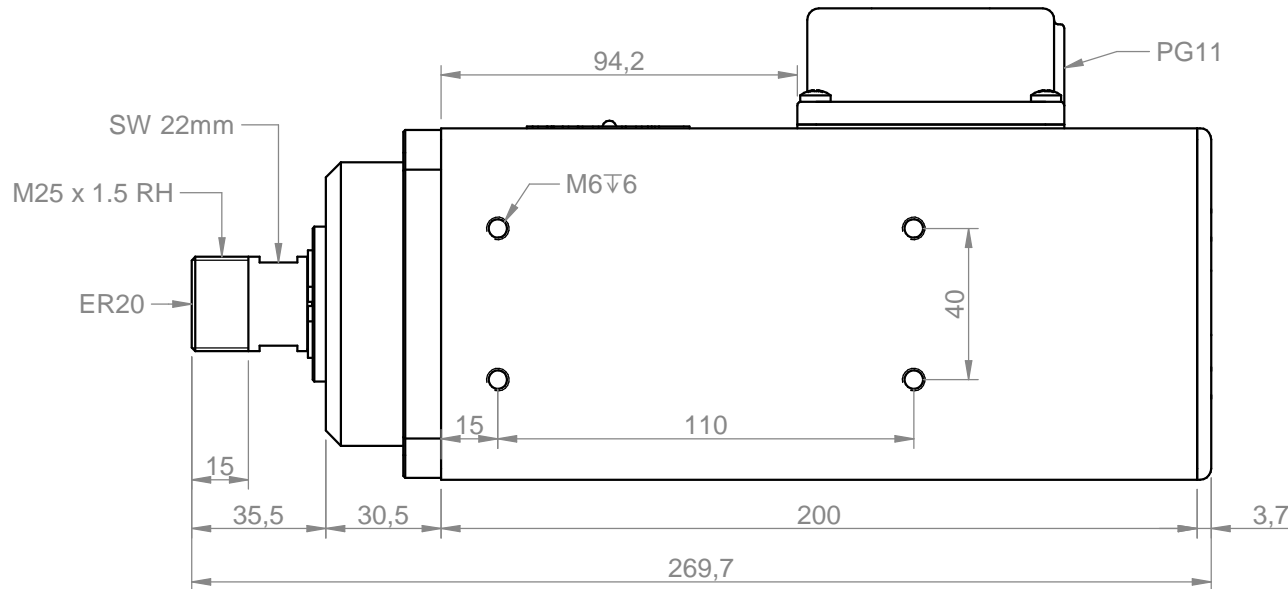
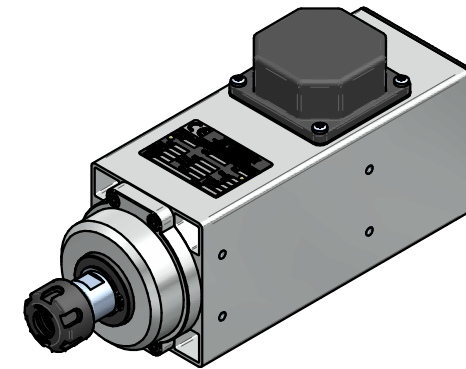
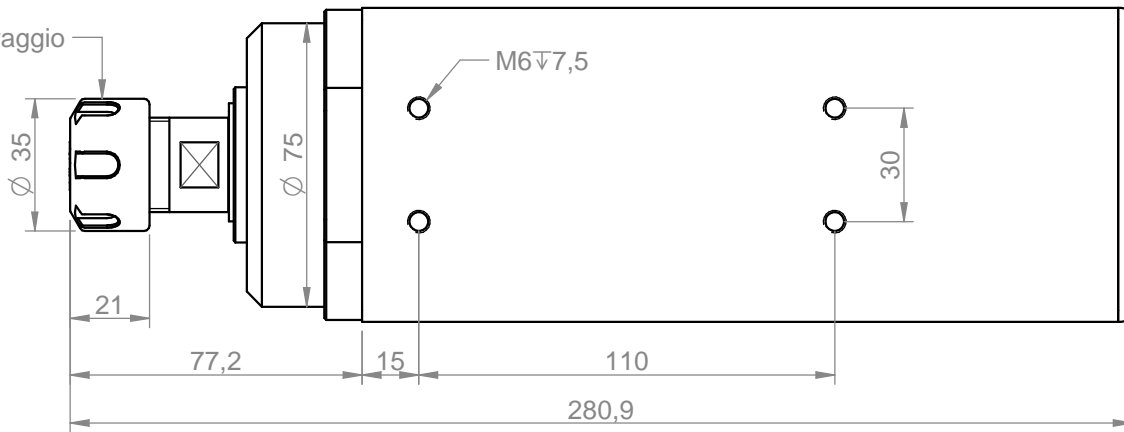






Ghiera serraggio  
GTS20 RH



|   |  |   |                                  |   |   |  |   |   |
|---|--|---|----------------------------------|---|---|--|---|---|
| Power [kW]<br><b>1.6</b>  | Duty Cycle<br><b>S1</b>                  | Base speed [rpm]<br><b>18000</b>        | Base freq. [Hz]<br><b>300</b>    | Base voltage Δ [V]<br><b>220</b>  | Base voltage Y [V]<br><b>380</b>  | Protection<br><b>IP54</b>                      | Ins. Cl.<br><b>F</b>  |  |
| Min speed [rpm]<br><b>6000</b>  |  | Max speed [rpm]<br><b>18000</b>         | Max freq. [Hz]<br><b>300</b>     | Absorb. Δ [A]<br><b>8.1</b>   | Absorb. Y [A]<br><b>4.7</b>   | Part number on nameplate<br><b>COM41470229</b> |   |   |
| Balancing: G2.5 - ISO 1940<br>@ maximum motor speed   |  | Balancing type                          |                                  | tool type<br>full key  | tool type<br>half key  | Peso / weight<br><b>5.44 kg</b>                |   | Teknomotor S.r.l.<br>Via Argenega 31, I-32038 Quero Vas (BL)<br>www.teknomotor.com    |
| Tolleranze non quotate / unlisted tollerances: ±0.5mm<br>Smussi non quotati / unlisted chamfers: ±0.5mm |  |   |                                  | $\nabla = 0.8 \nabla$   | $\nabla = 3.2 \nabla$   | $\nabla = 12.5 \nabla$                         | $\sim = \nabla$   |   |
| rev. n°<br><b>00</b>  | description<br><b>Emissione</b>          |   |                                  | date<br>15/02/2010  | signature<br>D. Bottarel  | Customer<br><b>Catalogo</b>                    |   |   |
| drawing code<br><b>COM41470229</b>  |  |   |                                  |   |   | Drawing n°<br><b>2636</b>                      |   |   |
| drawn - date<br>D. Bottarel - 15/02/2010  | approved - date<br>S. Perli - 15/02/2010 | checked - date<br>S. Perli - 15/02/2010 | sostituisce il<br>sostituito dal |   | foglio / sheet<br>1 / 1   | scala<br>1:2                                   |  |   |